



PERSONA Taiwan Empowering Innovation in Interactive Technology

Smart Displays | Touch Solutions | Integrated Education Systems

One Display Endless Possibilities



Introduction

Persona Taiwan is a premier manufacturer of advanced multi-touch displays, digital signage systems, industrial monitors, and interactive kiosks. With a strong focus on educational, corporate, and commercial applications, we deliver integrated, high-performance solutions tailored to modern environments. Our team also provides professional support to help partners succeed in local tender bids.

Backed by over 15 years of industry expertise, Persona Taiwan has evolved from OEM/ODM services to a provider of intelligent, user-driven technologies. We proudly maintain a 93% customer satisfaction rate and remain committed to continuous product innovation and excellence.

Partner with Persona Taiwan to lead the next wave of smart display technology worldwide.

Why Persona?



Globally Trusted
by Institutions



Quick, User-Friendly



Global Support,
Passionate Team



Tailored Solutions
for Your Needs

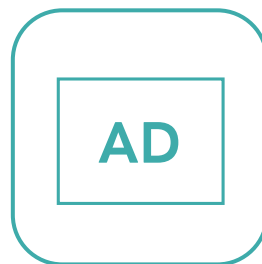
Diverse Solutions



Educational
Solutions



Entertainment
Solutions



Advertising
Solutions



Business
Solutions

Education

Simplifying Smart Classrooms

Inspire Participation. Enhance Understanding.

Persona displays empower teachers to deliver clear, interactive, and engaging lessons.



Built-in whiteboard and smart annotation tools



Wireless screen sharing from multiple devices



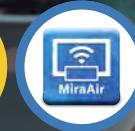
Comfortable viewing: eye-care and anti-glare



Instant input source switch (Android/Windows/Mac)



Works with Google, Microsoft, and top EdTech





Classroom-Ready Ecosystem



Seamless Tools for Effective Teaching



86" Smart Blackboard
Touchscreen with sideboards, Android OS webcam, and OPS —integrated into a sleek, all-in-one design.



Smart Blackboard Kits
Sideboards paired with IFPD, bringing together the best of traditional and digital teaching.



Visualizer Camera
Present books, experiments, and art in vivid 4K detail.

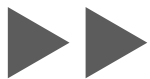


Charging Cart
Supports a wide range of devices, efficiently charging, storing, and securing iPads, laptops, and more.

Business



Collaboration Without Boundaries



Smarter Meetings, Better Presentations

Persona is your all-in-one solution for meetings, training, and collaboration. With wireless screen sharing, video conferencing support, interactive, built-in tools, it keeps teams connected, engaged, and productive.



Host Zoom and Teams meetings directly on the screen

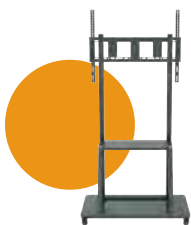
Annotate in real time on multiple screens using the whiteboard

Share content wirelessly from multiple devices simultaneously

Portable stands for flexible room setup



4K AI Webcam



Movable Stand



ClickShare



Magic Table



14D
Fully Upgraded
to Android 14

55" Touch Screen 4K+UHD Multi-Touch



Front Slot



Built-in Speakers



Power Switch



NEW ERA SMART TOUCH MAKING INTERACTION SIMPLER

Robust built-in features eliminate the need for extra drivers. Supports 50-point multi-touch, wireless 9-split projection, built-in electronic whiteboard, smart eye protection, and compatibility with various software and OS. Upgrade to Android 14, with optional memory and storage expansions to 16 GB and 256 GB for seamless multitasking.

Feature Highlights

◆ 4K Ultra HD Quality

The 3840x2160 resolution enhances screen clarity and detail for vivid, life-like display and viewing experiences.

◆ 9-Split Wireless Projection

Supports 9-split screen projection for simultaneous multi-device display, suitable for team meetings and classroom instruction to enhance discussion flow.

◆ Built-in Electronic Whiteboard

Integrated hardware and software electronic whiteboard, supports multi-person and multi-touch writing, ensuring fluid notation and creative brainstorming.

◆ Smart Eye Protection

Features AG-grade tempered glass with anti-glare and non-reflective properties, reducing eye fatigue from prolonged use.

◆ TYPE-C Multi-Function Interface

Supports high-speed file transfer, touch feedback, multimedia transmission, and device charging among other features.

◆ Supports 50-point multi-touch

Supports 50-point multi-touch without driver installation, smooth and responsive for multiple users.

All-in-One Device · More Features Beyond Traditional Projection!

◆ Smart Education ◆ Corporate Meetings

◆ Video Displays ◆ Interactive Teaching ◆ Interactive Guided Tours



PRODUCT SPECIFICATION



	55KTA-PRO-FULL
Size	55"
Dimension	1261.6(W)×760.4(H)×87.57(D)mm
Display Area	1211.6 × 682.4mm
Contrast	1200 : 1
Response Time	8 ms
Power Consumption	≤ 160W
Brightness	450 cd / m ²
Weight	25 kg
Touch Module	Integrated Design (Non-Attachable)
Tempered Glass	AG-grade tempered glass with scratch-resistant, anti-glare, and low-reflection surface. Hardness >9H (pencil hardness test), thickness 4mm
Resolution	3840 × 2160 @60Hz
Aspect Ratio	16 : 9
Viewing Angle	178°
Touch Resolution	32767 × 32767
Touch Points	Up to 50 points
Touch Technology	Surface Light Wave Infrared Touch
Backlight Life	50,000 hours - Equipped with DLED backlight module and supports multi-language user interface
Audio	Built-in 20W x 20W Speakers
Touch Method	Supports touch interaction using fingers, stylus, or non-sharp objects.
Hue	1.07 Billion colors
Input Terminals	HDMI IN*3、DP IN*1、VGA*1、USB*5、Touch-USB*2、RJ45 IN*1 MIC*1、Type-C(USB)*2、PC AUDIO*1、RS232*1、OPS slot*1、TFcard*1
Output Terminals	HDMI OUT*1、COAX*1、AUDIO OUT*1、RJ45 OUT*1
Built-in OS	Android 14, 8GB DDR4 memory, 128GB storage (Optional upgrade to 16GB memory and 256GB storage) WiFi 6: 2.4G / 5G, Bluetooth BT5.2
CPU	Octa-core ARM, 1.5GHz, Max. 2.2GHz
Speaker	Enclosure Speaker 100~15KHz
Screen Control	Includes a fully functional remote control with one-touch power on/off, operable via RS232 or touch controls
Firmware Features	Supports dual-system switching, built-in wired network sharing and wireless internet sharing, automatic signal detection, and wireless screen mirroring for phones or tablets
Special Features	<ul style="list-style-type: none"> ◆ Electronic Whiteboard Software ◆ Automatic Signal Switching ◆ USB Sharing Function ◆ Wireless Screen Mirroring Function ◆ Cross-Platform Annotation Function ◆ Scheduled Power On / Off Function ◆ 9-Split Screen Mirroring ◆ Wi-Fi Hotspot Sharing
Temperature / Humidity	Storage : -20°C~40°C / 5% ~ 95% , Operation : -20°C ~ 75°C / 10% ~ 80%
OS Compatibility	Windows, Linux, Mac, Android, Chrome
OPS slot	Windows (additional purchase)
Input Voltage	AC 100 ~ 240V, 50 / 60 Hz
Installation Method	Wall-mounted / Floor Stand / Electric Lift Rotating Stand / Magic Table - Optional Accessories

* Design and specifications are subjected to change without prior notice

PERSONA

8F., No. 219, Sec. 2, New Taipei Blvd., Xinzhuang Dist.,
New Taipei City 242032, Taiwan info@persona.com.tw



Website



LinkedIn



YouTube

KTA-PRO-FULL



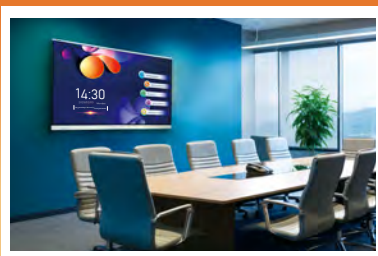
 Google EDLA Verified

14
Fully Upgraded
to Android 14

   
Touch Screen
4K+UHD Multi-Touch



Included Software



NEW ERA SMART TOUCH MAKING INTERACTION SIMPLER

Robust built-in features eliminate the need for extra drivers. Supports 50-point multi-touch, wireless 9-split projection, built-in electronic whiteboard, smart eye protection, and compatibility with various software and OS. Upgrade to Android 14, with optional memory and storage expansions to 16 GB and 256 GB for seamless multitasking.

Feature Highlights

◆ 4K Ultra HD Quality

The 3840x2160 resolution enhances screen clarity and detail for vivid, life-like display and viewing experiences.

◆ 9-Split Wireless Projection

Supports 9-split screen projection for simultaneous multi-device display, suitable for team meetings and classroom instruction to enhance discussion flow.

◆ Built-in Electronic Whiteboard

Integrated hardware and software electronic whiteboard, supports multi-person and multi-touch writing, ensuring fluid notation and creative brainstorming.

◆ Smart Eye Protection

Features AG-grade tempered glass with anti-glare and non-reflective properties, reducing eye fatigue from prolonged use.

◆ TYPE-C Multi-Function Interface

Supports high-speed file transfer, touch feedback, multimedia transmission, and device charging among other features.

◆ Supports 50-point multi-touch

Supports 50-point multi-touch without driver installation, smooth and responsive for multiple users.

All-in-One Device · More Features Beyond Traditional Projection!

◆ Smart Education ◆ Corporate Meetings

◆ Video Displays ◆ Interactive Teaching ◆ Interactive Guided Tours



PRODUCT SPECIFICATION



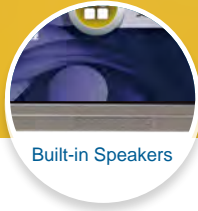
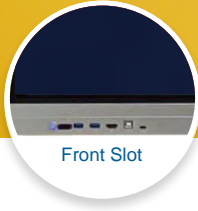
	KTA-PRO-FULL		
	65"	75"	86"
Size	65"	75"	86"
Dimension	1489.37(W)×905.29(H)×103.86(D)mm	1710.54(W)×1029.67(H)×103.86(D)mm	1962.32(W)×1174.18(H)×103.86(D)mm
Display Area	1428.48 × 803.52 mm	1649.66 × 927.94mm	1895.04 × 1065.96 mm
Contrast	1200 : 1 (dynamic comparison 5000:1)	1200 : 1 (dynamic comparison 5000:1)	1200 : 1 (dynamic comparison 5000:1)
Response Time	8 m ²	8 m ²	8 m ²
Power Consumption	≤ 200W	≤ 280W	≤ 400W
Brightness	450 cd / m ²	450 cd / m ²	450 cd / m ²
Weight	41 kg	52 kg	69 kg
Touch Module	Integrated Design (Non-Attachable)		
Tempered Cover Glass	AG-grade tempered glass with scratch-resistant, anti-glare, and low-reflection surface. Hardness >9H (pencil hardness test), thickness 4mm		
Resolution	3840 × 2160 @60Hz		
Aspect Ratio	16 : 9		
Viewing Angle	178°		
Touch Resolution	32767 × 32767		
Touch Points	50-point touch		
Touch Technology	Surface Light Wave Infrared Touch		
Backlight Life	50,000 hours - Equipped with DLED backlight module and supports multi-language user interface		
Audio	Built-in 20W x 20W Speakers		
Touch Method	Supports touch interaction using fingers, stylus, or non-sharp objects.		
Hue	1.07 Billion colors		
Input Terminals	HDMI IN*3、DP IN*1、VGA*1、USB*5、Touch-USB*2、RJ45 IN*1 MIC*1、Type-C(USB)*2、PC AUDIO*1、RS232*1、OPS slot*1、TFcard*1		
Output Terminals	HDMI OUT*1、COAX*1、AUDIO OUT*1、RJ45 OUT*1		
Built-in OS	Android 14, 8GB DDR4 memory, 128GB storage (Optional upgrade to 16GB memory and 256GB storage) WiFi 6: 2.4G / 5G, Bluetooth BT5.2		
CPU	Octa-core ARM, 1.5GHz, Max. 2.2GHz		
Speaker	Enclosure Speaker 100~15KHz		
Screen Control	Includes a fully functional remote control with one-touch power on/off; operable via RS232 or touch controls		
Firmware Features	Supports dual-system switching, built-in wired network sharing and wireless internet sharing, automatic signal detection, and wireless screen mirroring for phones or tablets		
Special Features	<ul style="list-style-type: none"> ◆ Electronic Whiteboard Software ◆ Wireless Screen Mirroring Function ◆ 9-Split Screen Mirroring 	<ul style="list-style-type: none"> ◆ Automatic Signal Switching ◆ Cross-Platform Annotation Function ◆ Wi-Fi Hotspot Sharing 	<ul style="list-style-type: none"> ◆ USB Sharing Function ◆ Scheduled Power On / Off Function
Temperature / Humidity	Storage : -20°C~40°C / 5%~95% , Operation : -20°C ~ 75°C / 10%~80%		
OS Compatibility	Windows, Linux, Mac, Android, Chrome		
Optional Systems	Windows		
Input Voltage	AC 100 ~ 240V, 50 / 60 Hz		
Installation Method	Wall-mounted / Floor Stand / Electric Lift Rotating Stand / Magic Table - Optional Accessories		

* Design and specification are subjected to change without prior notice

All-in-One Device · More Features Beyond Traditional Projection!

◆ Smart Education ◆ Corporate Meetings

◆ Video Displays ◆ Interactive Teaching ◆ Interactive Guided Tours



PRODUCT SPECIFICATION



	70" KTA-PRO-FULL
Size	70 "
Dimension	1587.10(W)×947.72(H)×81.74(D)mm
Display Area	1537.43 × 873.76mm
Contrast	1200 : 1 (dynamic comparison 5000:1)
Response Time	8 m ²
Power Consumption	≤ 300W
Brightness	450 cd / m ²
Weight	36 kg
Touch Module	Integrated Design (Non-Attachable)
Tempered Cover Glass	AG-grade tempered glass with scratch-resistant, anti-glare, and low-reflection surface. Hardness >9H (pencil hardness test), thickness 4mm
Resolution	3840 × 2160 @60Hz
Aspect Ratio	16 : 9
Viewing Angle	178°
Touch Resolution	32767 × 32767
Touch Points	50-point touch
Touch Technology	Surface Light Wave Infrared Touch
Backlight Life	50,000 hours - Equipped with DLED backlight module and supports multi-language user interface
Audio	Built-in 20W x 20W Speakers
Touch Method	Supports touch interaction using fingers, stylus, or non-sharp objects.
Hue	1.07 Billion colors
Input Terminals	HDMI IN*3、DP IN*1、VGA*1、USB*5、Touch-USB*2、RJ45 IN*1 MIC*1、Type-C(USB)*2、PC AUDIO*1、RS232*1、TF card*1
Output Terminals	HDMI OUT*1、COAX*1、AUDIO OUT*1、RJ45 OUT*1
Built-in OS	Android 14, 8GB DDR4 memory, 128GB storage (Optional upgrade to 16GB memory and 256GB storage) WiFi 6: 2.4G / 5G, Bluetooth BT5.2
CPU	Octa-core ARM, 1.5GHz, Max. 2.2GHz
Speaker	Enclosure Speaker 100~15KHz
Screen Control	Includes a fully functional remote control with one-touch power on/off; operable via RS232 or touch controls
Firmware Features	Supports dual-system switching, built-in wired network sharing and wireless internet sharing, automatic signal detection, and wireless screen mirroring for phones or tablets
Special Features	<ul style="list-style-type: none"> <li style="width: 33%;">◆ Electronic Whiteboard Software <li style="width: 33%;">◆ Automatic Signal Switching <li style="width: 33%;">◆ USB Sharing Function <li style="width: 33%;">◆ Wireless Screen Mirroring Function <li style="width: 33%;">◆ Cross-Platform Annotation Function <li style="width: 33%;">◆ Scheduled Power On / Off Function <li style="width: 33%;">◆ 9-Split Screen Mirroring <li style="width: 33%;">◆ Wi-Fi Hotspot Sharing
Temperature / Humidity	Storage : -20°C~40°C / 5%~95% , Operation : -20°C~75°C / 10%~80%
OS Compatibility	Windows, Linux, Mac, Android, Chrome
Optional Systems	Windows
Input Voltage	AC 100~240V, 50 / 60 Hz
Installation Method	Wall-mounted / Floor Stand / Electric Lift Rotating Stand / Magic Table - Optional Accessories

* Design and specification are subjected to change without prior notice

All-in-One Device · More Features Beyond Traditional Projection!

◆ Smart Education ◆ Corporate Meetings

◆ Video Displays ◆ Interactive Teaching ◆ Interactive Guided Tours



PRODUCT SPECIFICATION

	100" KTA-PRO-FULL
Size	100"
Dimension	2271.08 (W) x 1348.83 (H) x 104.87(D) mm
Display Area	2205.6 x 1241.7 mm
Contrast	1200 : 1 (dynamic comparison 5000:1)
Response Time	8 ms
Power Consumption	≤ 400W
Brightness	350 cd / m ²
Weight	100 kg
Touch Module	Integrated Design (Non-Attachable)
Tempered Cover Glass	AG-grade tempered glass with scratch-resistant, anti-glare, and low-reflection surface. Hardness >9H (pencil hardness test), thickness 4mm
Resolution	3840 x 2160 @60Hz
Aspect Ratio	16 : 9
Viewing Angle	178 / 178
Touch Resolution	32767 x 32767
Touch Points	50-point touch
Touch Technology	Surface Light Wave Infrared Touch
Backlight Life	50,000 hours - Equipped with DLED backlight module and supports multi-language user interface
Audio	Built-in 20W x 20W Speakers
Touch Method	Supports touch interaction using fingers, stylus, or non-sharp objects.
Hue	1.07 Billion colors
Input Terminals	HDMI IN*3、DP IN*1、VGA*1、USB*6、Touch-USB*2、RJ45 IN*1、MIC IN*1 Type-C(USB)*2、PC AUDIO*1、RS232*1、TF CARD*1、OPS slot*1
Output Terminals	HDMI OUT*1、COAX*1、AUDIO OUT*1、RJ45 OUT*1
Built-in OS	Android 14, 8GB DDR4 memory, 128GB storage (Optional upgrade to 16GB memory and 256GB storage) WiFi 6: 2.4G / 5G, Bluetooth BT5.2
CPU	Octa-core ARM, 1.5GHz, Max. 2.2GHz
Speaker	Enclosure Speaker 100~15KHz
Screen Control	Includes a fully functional remote control with one-touch power on/off; operable via RS232 or touch controls
Firmware Features	Supports dual-system switching, built-in wired network sharing and wireless internet sharing, automatic signal detection, and wireless screen mirroring for phones or tablets
Special Features	<ul style="list-style-type: none"> <li style="width: 33%;">◆ Electronic Whiteboard Software <li style="width: 33%;">◆ Automatic Signal Switching <li style="width: 33%;">◆ USB Sharing Function <li style="width: 33%;">◆ Wireless Screen Mirroring Function <li style="width: 33%;">◆ Cross-Platform Annotation Function <li style="width: 33%;">◆ Scheduled Power On / Off Function <li style="width: 33%;">◆ 9-Split Screen Mirroring <li style="width: 33%;">◆ Wi-Fi Hotspot Sharing
Temperature / Humidity	Storage : -20°C~40°C / 5% ~ 95% , Operation : -20°C ~ 75°C / 10% ~ 80%
OS Compatibility	Windows, Linux, Mac, Android, Chrome
Optional Systems	Windows
Input Voltage	AC 100 ~ 240V, 50 / 60 Hz
Installation Method	Wall-mounted / Floor Stand / Electric Lift Rotating Stand / Magic Table - Optional Accessories

* Design and specification are subjected to change without prior notice



ClassCraft

AI Integration x Interactive Learning System

ClassCraft is a data-driven teaching tool that connects lesson prep, instruction, and learning progress. Teachers can quickly create AI-generated questions to improve preparation, use real-time interaction and auto-grading to track understanding, and apply learning analytics for personalized teaching.



» Student Management

Students can join the class via mobile devices, tablets, or computers. Teachers can track attendance and monitor student's learning progress in real time.



» Interactive Tool

Teachers can engage students through quick-response games and interactive exercises/tasks to enhance classroom interaction.



» Diverse Question Types

Supports true/false, single or multiple choice, short answer audio, links, and AI-generated questions. Customizable to fit instructional needs.



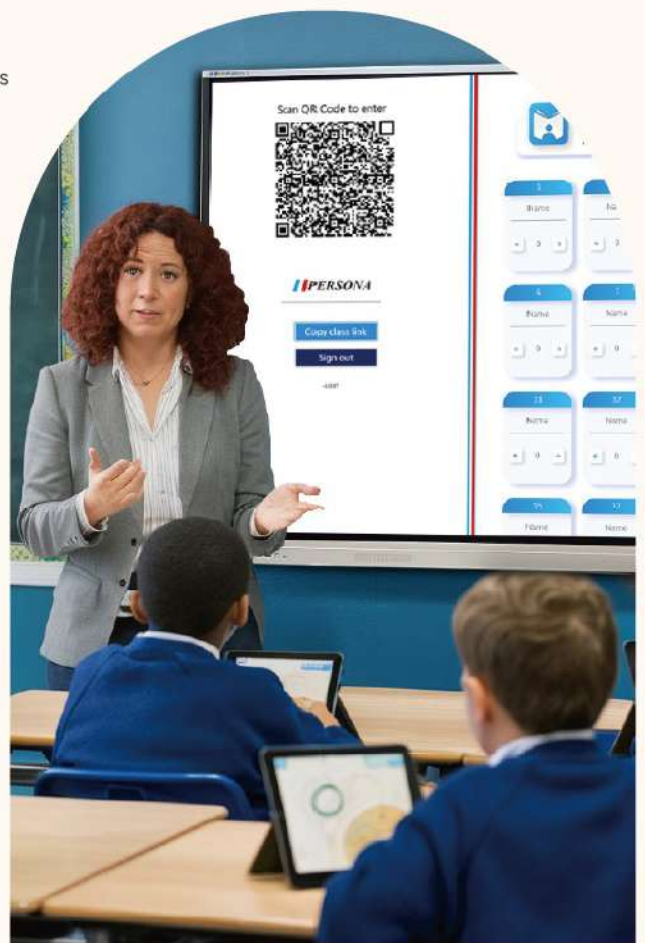
» Task Dispatch

Teachers can assign tasks during class or organize group quick-response activities. Enable real-time grading and timely feedback for students.



» Quiz Bank

Teachers can build question banks during prep using AI tools to create or organize questions efficiently, saving time and enhancing convenience.



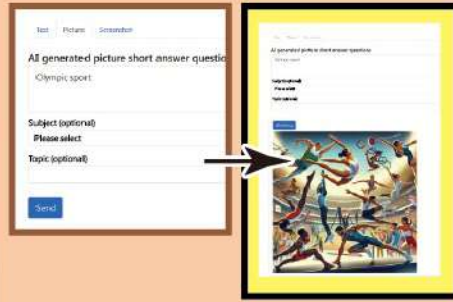
1. Pre-Class — AI-Generated Question Types AI

Before class, teachers can use AI to quickly generate questions and save them in the Quiz Bank for reuse, reducing prep time and improving efficiency.

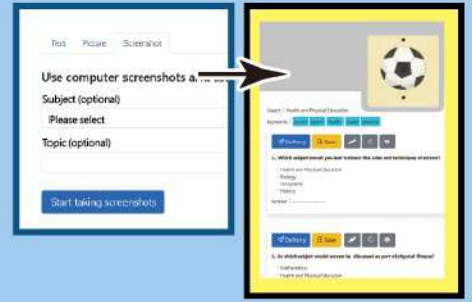
AI-Generated Multiple-Choice Text Questions



AI-Generated Short Answer Text Questions



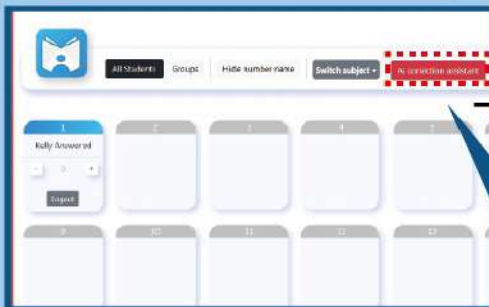
Computer Screenshot-Based AI-Generated Questions



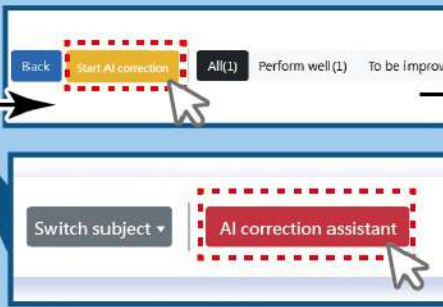
2. In-Class — AI Real-Time Grading Assistant AI (Short Answer)

During class, teachers can boost engagement through task delivery and interactive tools. After students submit their answers, AI instantly grades and provides analysis to help teachers adjust instruction. Teachers can define grading criteria for more targeted feedback and improved learning outcomes.

① Click "AI correction assistant"



② Start AI correction



③ Set Grading Focus | Improve Efficiency



④ Analyze and Suggest Improvements

No	Name	Reply	Comment
1	Kelly	At an international sporting event, three men and one woman are running a race.	Keep up the effort, Kelly! Detail

3. Post-Class — AI Learning Summary AI

After class, AI automatically compiles learning records and generates class performance analytics with graphs. This helps teachers track class learning trends and progress, enabling quality instruction and efficient feedback.

① AI Data Summary

START TIME	END TIME	TOTAL USAGE TIME	TEST	QUIZ	ATTENDANCE	AI SUMMARY
Dec 11, 2025, 8:54 a.m.	Dec 11, 2025, 10:01 a.m.	01:14:42	2	Quiz Result	Attendance	Summary
Dec 10, 2025, 11:59 a.m.	Dec 11, 2025, 8:54 a.m.	20:58:24	0	Quiz Result	Attendance	Summary
Dec 10, 2025, 11:40 a.m.	Dec 10, 2025, 11:41 a.m.	00:00:05	0	Quiz Result	Attendance	Summary
Dec 10, 2025, 11:38 a.m.	Dec 10, 2025, 11:40 a.m.	00:03:20	0	Quiz Result	Attendance	Summary
Dec 9, 2025, 4:05 p.m.	Dec 9, 2025, 4:30 p.m.	00:08:05	1	Quiz Result	Attendance	Summary
Dec 9, 2025, 4:05 p.m.	Dec 9, 2025, 4:26 p.m.	00:00:01	0	Quiz Result	Attendance	Summary
Dec 8, 2025, 2:45 p.m.	Dec 8, 2025, 2:58 p.m.	00:10:52	0	Quiz Result	Attendance	Summary
Dec 8, 2025, 1:57 p.m.	Dec 8, 2025, 2:40 p.m.	00:46:05	0	Quiz Result	Attendance	Summary
Dec 8, 2025, 1:47 p.m.	Dec 8, 2025, 1:47 p.m.	00:00:01	0	Quiz Result	Attendance	Summary
Dec 8, 2025, 1:46 p.m.	Dec 8, 2025, 1:46 p.m.	00:00:17	0	Quiz Result	Attendance	Summary
Dec 8, 2025, 1:46 p.m.	Dec 8, 2025, 1:46 p.m.	00:00:02	0	Quiz Result	Attendance	Summary

② Analyze Class & Learning Results

Back Regenerate AI Summary

Class summary-2025-09-25 06:47:50.484910+00:00

Overall overview

This course involved geometry tests with participants demonstrating a high level of understanding, as evidenced by the perfect score in the picture.

The course comprised various geometry-related tests focusing on concepts such as shapes, angles, and congruency. The specific test question illustrated achieving a 100% success rate. This indicates a strong comprehension of the fundamental properties of geometric shapes among the participants.



8F., No. 219, Sec. 2, New Taipei Blvd., Xinzhuang Dist.,
New Taipei City 242032, Taiwan info@persona.com.tw



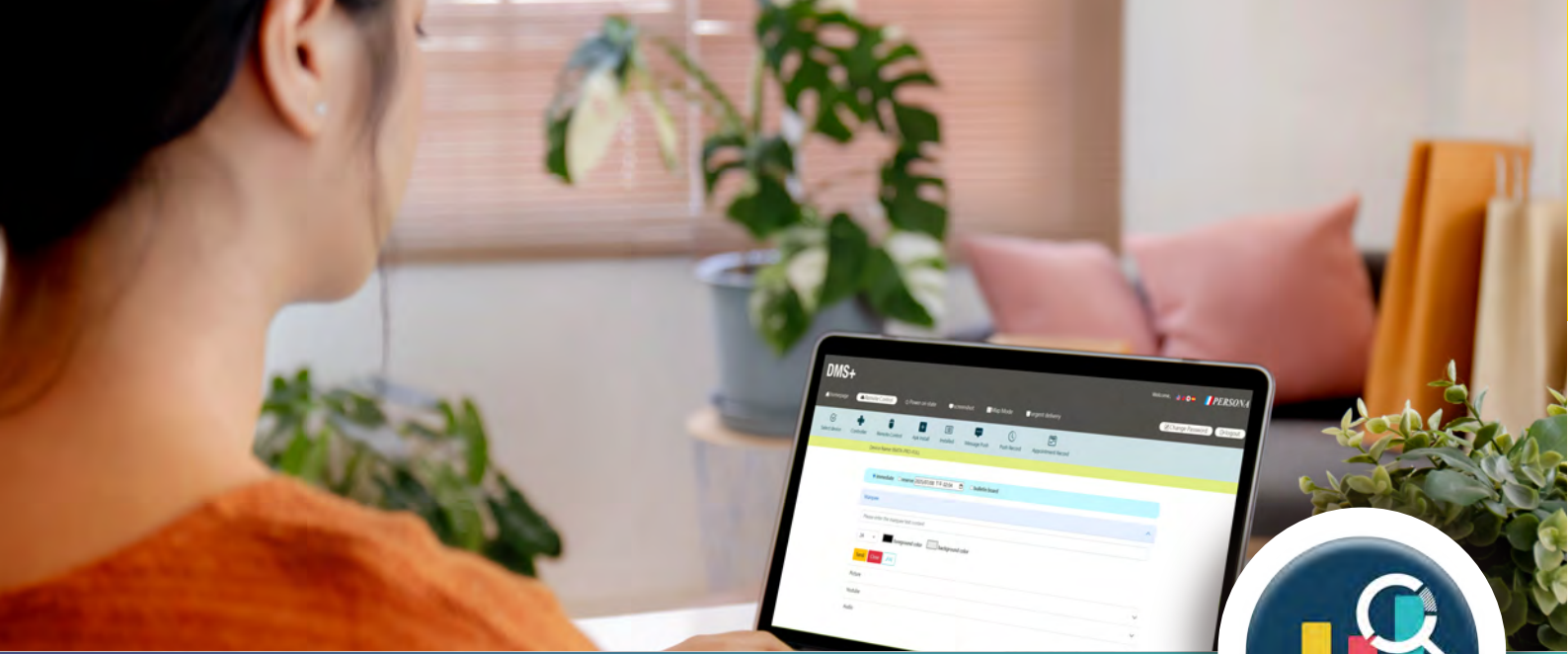
Website



LinkedIn



YouTube

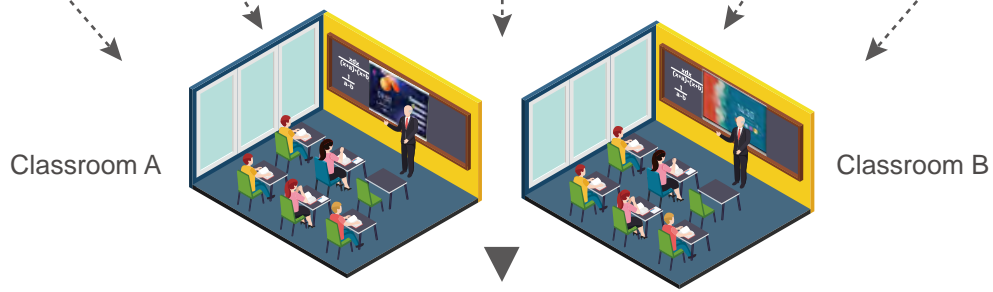


DMS+ Device Management System

DMS+ Function Overview



- Install apps remotely
- Monitor/control power status
- Remote control: screen/audio/network
- Input source switch
- Message push



Control various rooms touch screens through DMS+





DMS+



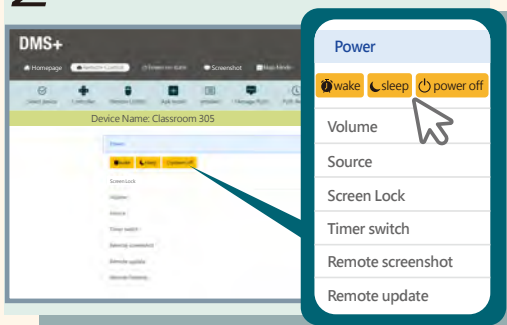
Key Highlights

1 Supports DMS+ Account / Google Account Login / QR-Code Login



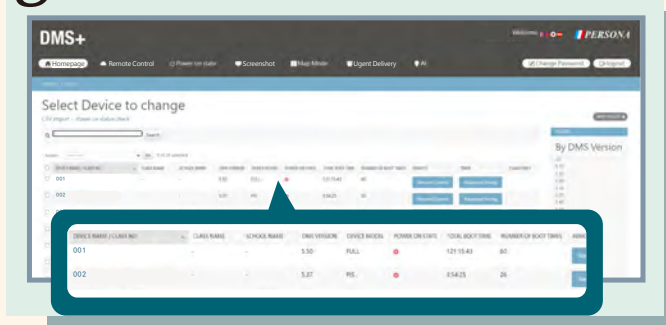
Supports DMS+ and Google logins on the backend.
Touchscreen also supports QR login for flexible and efficient operation.

2 Remote Control Device



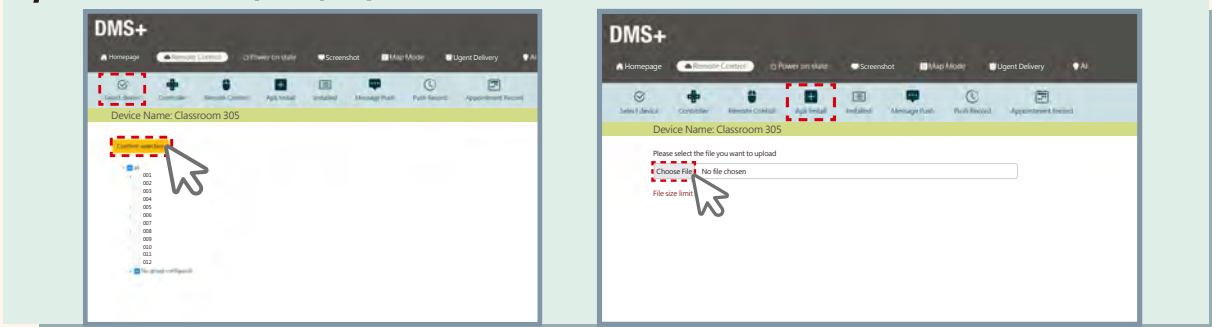
Supports the remote control of screen wake-up, sleep, shutdown, screen lock volume, and signal source.

3 Track Device Usage Remotely



Track the performance and usage of each touchscreen with detailed metrics such as total boot time, usage frequency, update history, and user data.

4 Remote Group Deployment & APK Installation



Instantly broadcast text/images/videos/audio; also view, install, or remove APKs on the device.

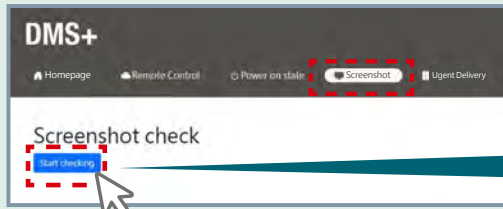


DMS+

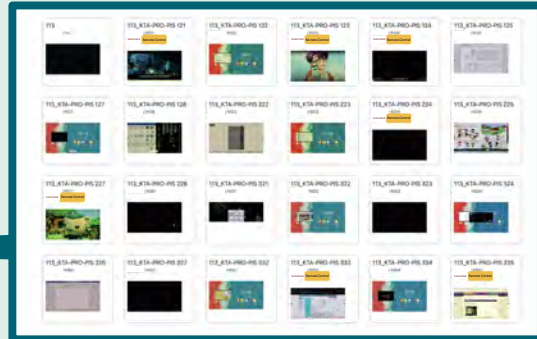


Key Highlights

5 Screenshot

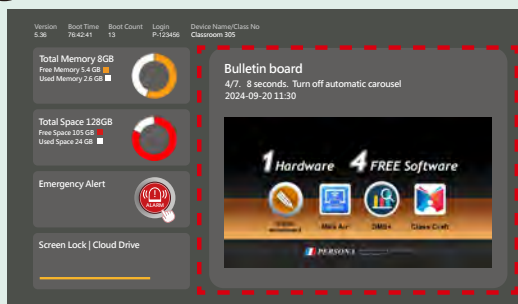


Real-Time Screenshot



The backend can capture screenshots from all devices under the account allowing quick troubleshooting.

6 Bulletin Board Announcement



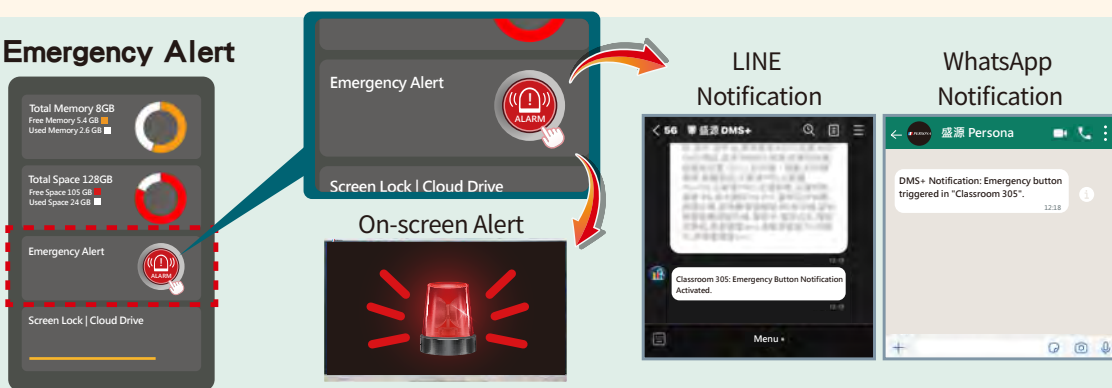
Display important information as a ticker, image, or YouTube video on the bulletin board. Stay updated with the latest news anytime, anywhere.

7 NFC Card Screen Lock / Auto Login



One-Tap Screen Lock / Cloud Drive Login.

9 Emergency Alert



Seamlessly integrated with LINE@ and WhatsApp, DMS+ enables emergency alerts for instant notification.



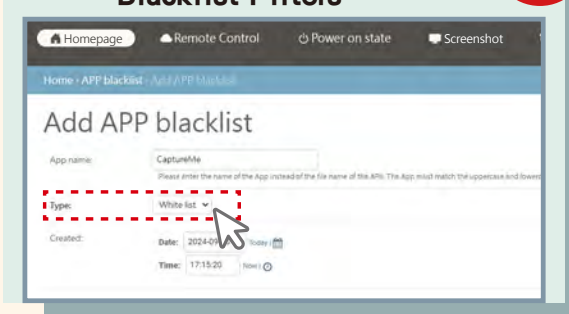
DMS+



Advanced Features

10 Implement Whitelist and Blacklist Filters

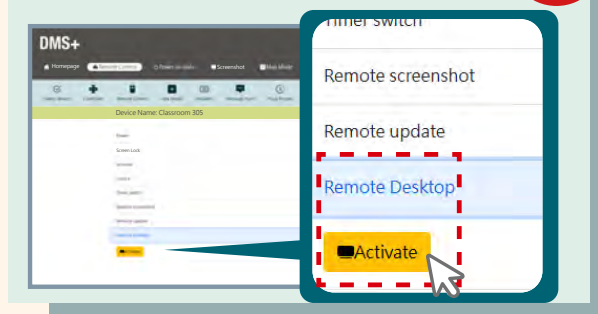
Optional Features



Allow users to safely operate by configuring optional software installation (whitelist) and prohibiting unauthorized software (blacklist).

11 Remote Display Control

Optional Features



Enables real-time remote control of touchscreens from the backend, enhancing operational efficiency for management and maintenance.

12 AI Broadcast

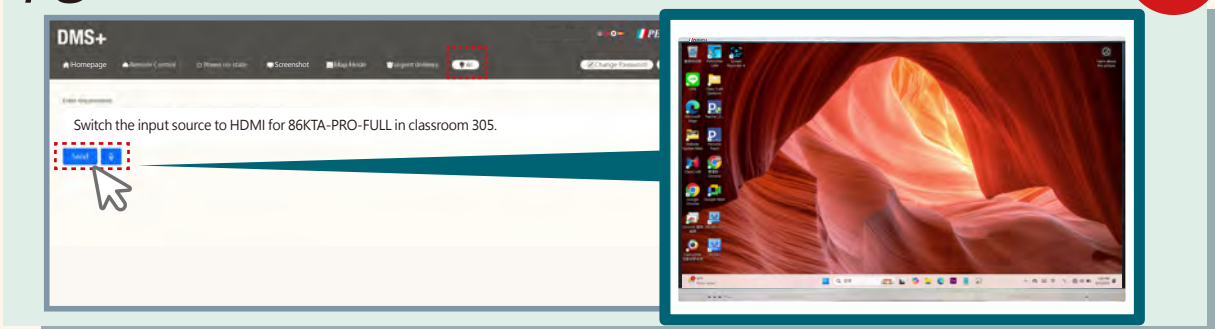
Optional Features



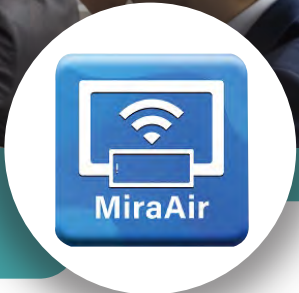
Tick the "broadcast" option, and AI will read the message.

13 AI Remote Control

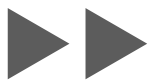
Optional Features



With AI commands, any DMS+ function can be remotely executed helping new users get started quickly.

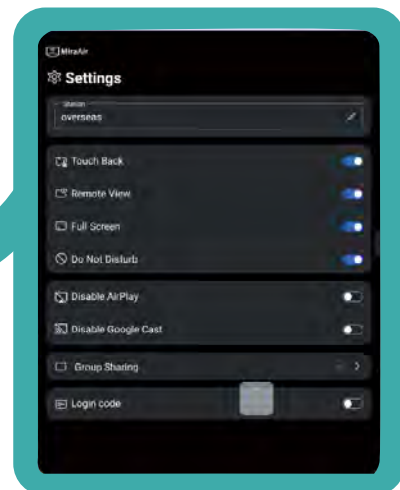


MiraAir Connect and Share Wirelessly - No Cables, No Limit



Effortless Screen Sharing Anywhere

Wirelessly project content from your laptop, smartphone, or tablet directly to the touch screen. Easily share presentations, videos, and images for more engaging teaching and meetings.



Screen Mirroring



Max. 9 Split Screen



4K Resolution



Touch Back
(Wireless control of your laptop)



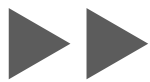
Remote View



Do Not Disturb Mode



Persona OPS PC



THE POWER OF WINDOWS

The Persona OPS PC is a plug-and-play onboard computer designed for effortless integration with all Persona interactive displays.

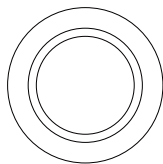


The background of the cover is decorated with several abstract geometric shapes. In the top left, there is a cluster of overlapping triangles in various shades of gray and a solid blue triangle. In the bottom left, there are two small black triangles. In the bottom center, there is a gray triangle and a larger dark blue triangle. On the right side, there is a large red triangle pointing to the right, and a dark blue triangle pointing to the left, partially overlapping the red one.

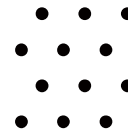
User Manual



Front Interface & Input Port



Power Button



Remote Sensor

- **Power Button:** Press to turn the device on/off
- **Remote Sensor:** For infrared remote control reception



①



①



②



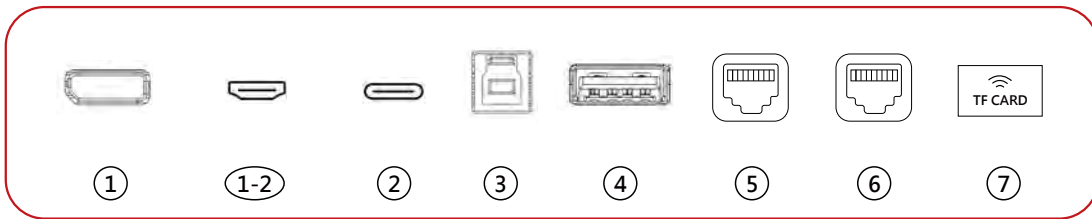
③



①-2

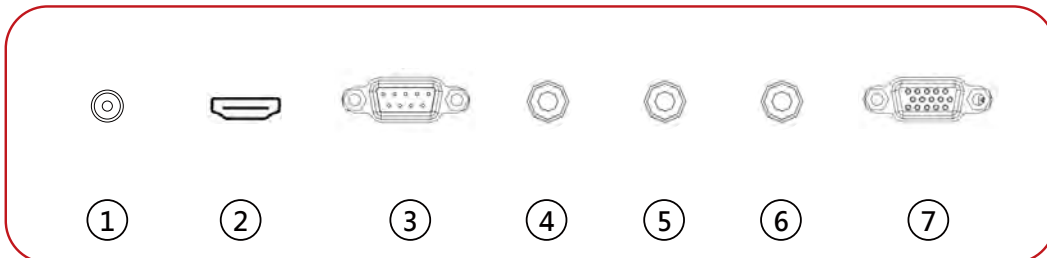
Front Ports

Number	Port	Function
1	USB (x2)	USB transfer interface compatible with USB flash drives, external HDDs, and other mobile storage devices.
1-2	Type-C	
2	HDMI	3840×2160 UHD AV input
3	TOUCH	USB port for touch signal (to PC)



Left-Side I/O Ports

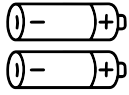
Number	Port	Function
1	DP IN	3840×2160 UHD AV input
1-2	HDMI (x2)	
2	Type-C	Compatible with USB flash drives for data access
3	TOUCH OUT	Touch signal to external input source
4	USB 2.0/3.0	USB input for storage or devices
5	RJ45 IN	1Gbps Ethernet Input Port
6	RJ45 OUT	1Gbps Ethernet Output Port
7	TF CARD Slot	Supports connection and data access from TF cards



Bottom-Side I/O Ports

Number	Port	Function
1	COAX	Digital coaxial audio output
2	HDMI OUT	HDMI output to external monitor
3	RS232 OUT	Serial control output
4	MIC IN	Microphone input
5	AUDIO OUT	3.5mm stereo output
6	PC AUDIO IN	3.5mm input from PC
7	VGA	VGA input up to 1920×1080 resolution

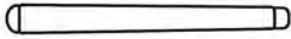
Accessories



Battery *2



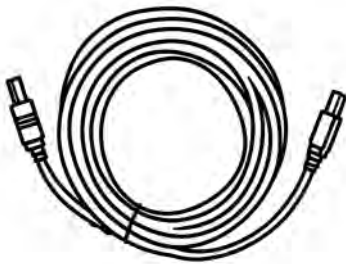
Antenna *3



Pen *2



Remote Control *1



Touchline *1



HDMI *1



Power Cord *1



Power Connection and Remote Setup Steps

1. Connect the power cord to the power port on the rear panel of the device.
2. Plug the power cord into an AC power outlet.
3. Switch on the power button (I/O) on the device. The status indicator at the bottom-left corner will turn from red to blue.
4. Insert batteries into the remote control, ensuring correct polarity as indicated inside the battery compartment.
5. Aim the remote control at the IR receiver located at the bottom-right corner of the device to operate it remotely.

Power Connection and Safety Instructions

Power Plug and Cable Handling:

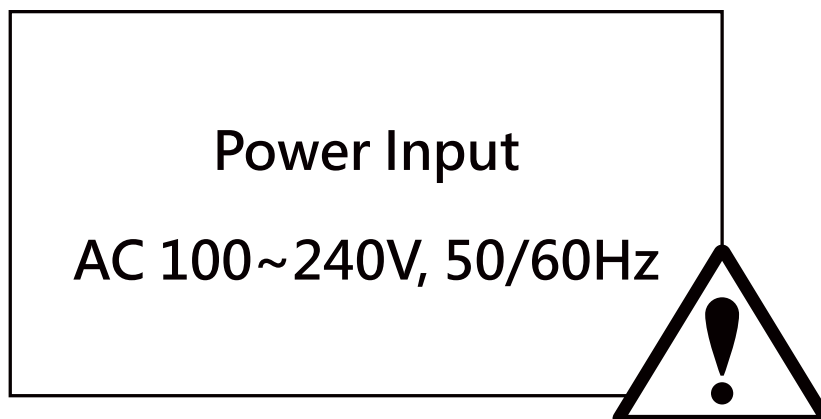
- ✧ Ensure the power plug is fully inserted into the socket. (Loose connection may prevent the screen from powering on properly.)
- ✧ Do not damage or cut the power cord. (Doing so may result in fire or electric shock hazards.)
- ✧ Never touch the power plug or cord with wet hands.

Usage Guidelines (Eye Protection Advice):

1. Take a 10-minute break after every 30 minutes of use.
2. Children under 2 years old should not watch the screen. For children over 2, limit viewing to less than 1 hour at a time.
3. Prolonged use may harm vision.

Handling and Installation Precautions:

- ✧ Keep the screen upright during transport and installation.
- ✧ Do not press or place heavy objects on the packaging or product, as it may cause deformation or glass damage.
- ✧ Use a certified wall mount that supports at least 80KG. Follow the mounting instructions carefully.
- ✧ Do not disassemble or modify the product or its internal components, as this may pose safety hazards.
- ✧ Ensure the installation site is well-ventilated. Avoid blocking the heat dissipation vents.

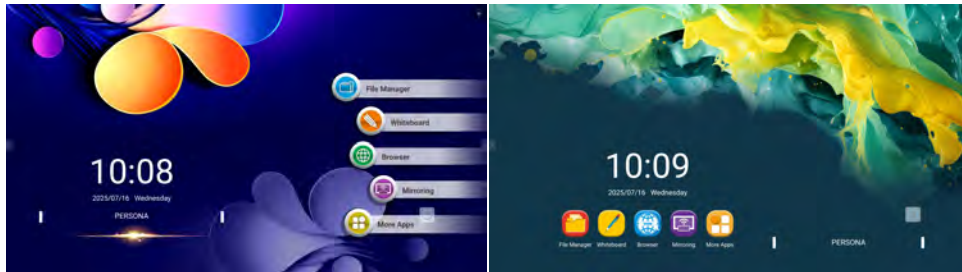


Product Features

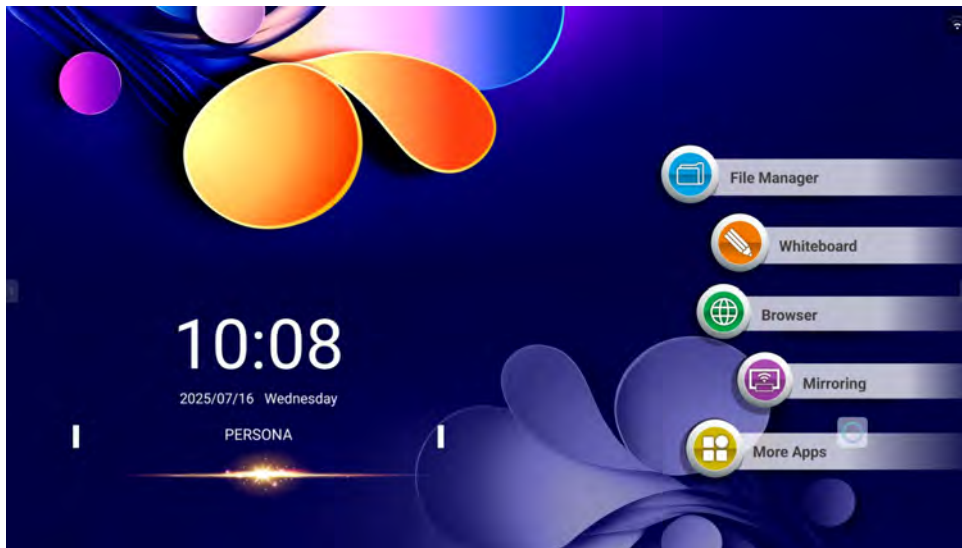
1. Homepage

1.1 Interface (Two Theme Options)

Themes can be switched under [Settings] > [Display] > [Theme Settings].



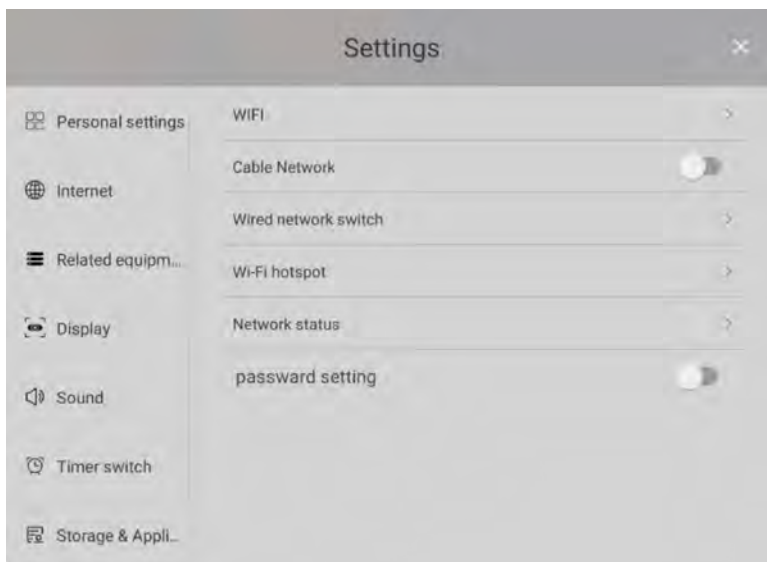
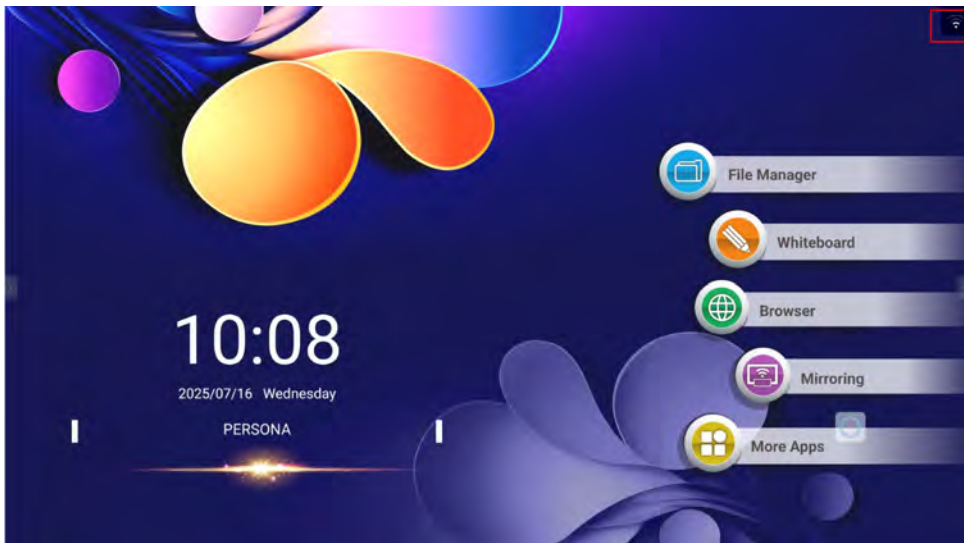
1.1.1 Quick Access Applications (as shown above):



- **File Manager:** Enter the file management interface.
- **Whiteboard:** Digital whiteboard tool. See: [Section 1.6]
- **Browser:** Connect to the internet, tap the Browser icon to access the web.
- **Mirroring:** Enter the wireless screen sharing interface. See: [Section 1.6]
- **More Apps:** View all installed applications within the system.

1.1.2 Internet

Long press the Wi-Fi icon to open the network settings window.



- **Wi-Fi Network:** Select the desired network and enter the password to connect.
- **Wired Network:** Simply connect the Ethernet cable to begin using the network.
- **Hotspot :** Share the device's internet connection with other devices via hotspot.
- **Network Status:** Check whether the device is successfully connected to a network.
- **Password Setup:** Set the password for Hotspot function.

1.2 Sidebar

Tap the icons **<** OR **>** on either side of the screen to expand the side toolbar.



1.2.1 Settings

The system settings menu includes configurations for network, personalization, audio/video, Bluetooth, scheduled power on/off, date and time, language, and system security.

1.2.2 Source Classification

Tap "Source" at the bottom of the sidebar to enter the source preview screen, then tap to switch the preview source.



1.2.3 All Active Windows

Displays all active background apps; tap "Close All" to terminate them instantly.

1.2.4 Annotation

Allows real-time annotation over any open application, with the option to export annotated content as a file or scan QRcode to save in mobile phone/tablet.



1.2.5 Volume Adjustment

Volume can be adjusted via the control panel or remote control.

1.3 Control Panel

Swipe from the edge of the screen to open the control panel.



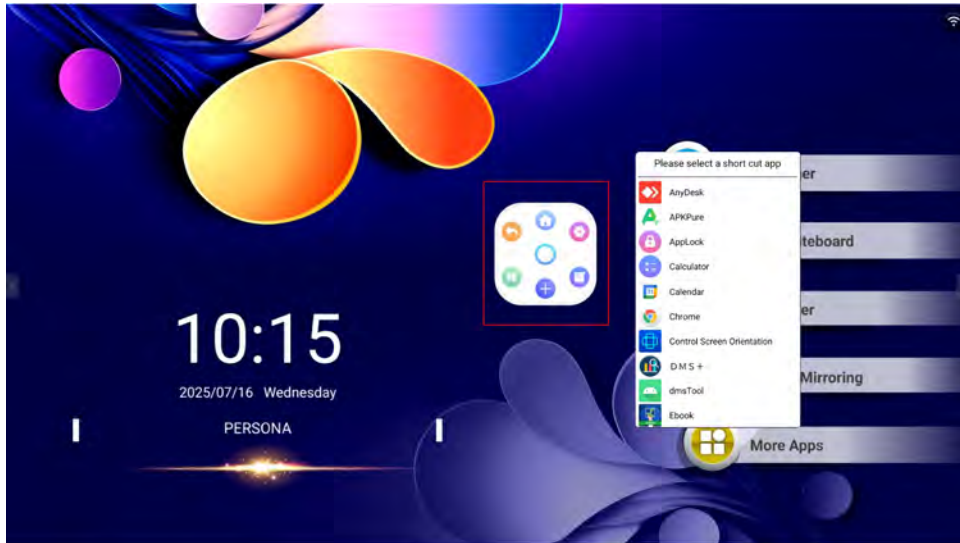
This area allows the users to set up custom shortcuts tailored to your needs. Highlighted functions include:

- **One-Tap Lock:** Set a password for unlocking, either numeric or gesture-based.
- **Screenshot:** Resize the screenshot area before capturing the screen.
- **Screen Recording:** Real-time screen recording is supported. If a microphone is connected, it can capture the speaker's voice as well.
- **Eye Care Mode:** Blue light filter helps protect your eyes during extended use.
- **Lock Screen:** Freezes the current window and disables touch input.

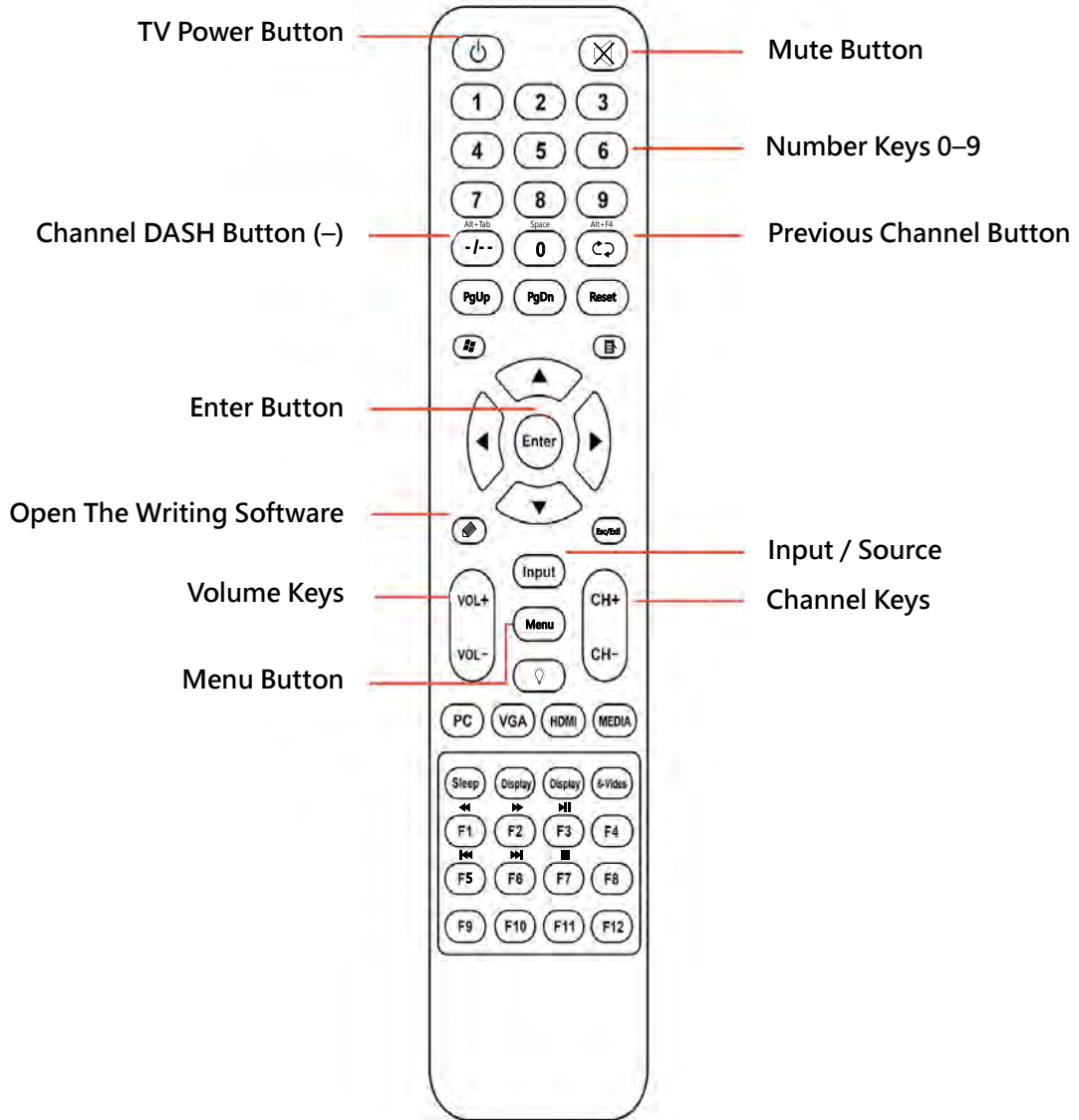
1.4 Floating Compass

Perform a three-finger long press to bring the floating menu to the touchscreen.

Tap the plus (+) icon to add your favorite or commonly used applications.



1.5 Remote



1.6 Software Assistance





PERSONA
www.persona.com.tw

PERSONA

8F., No. 219, Sec. 2, New Taipei Blvd., Xinzhuang Dist.,
New Taipei City 242032, Taiwan info@persona.com.tw



Website



LinkedIn



YouTube